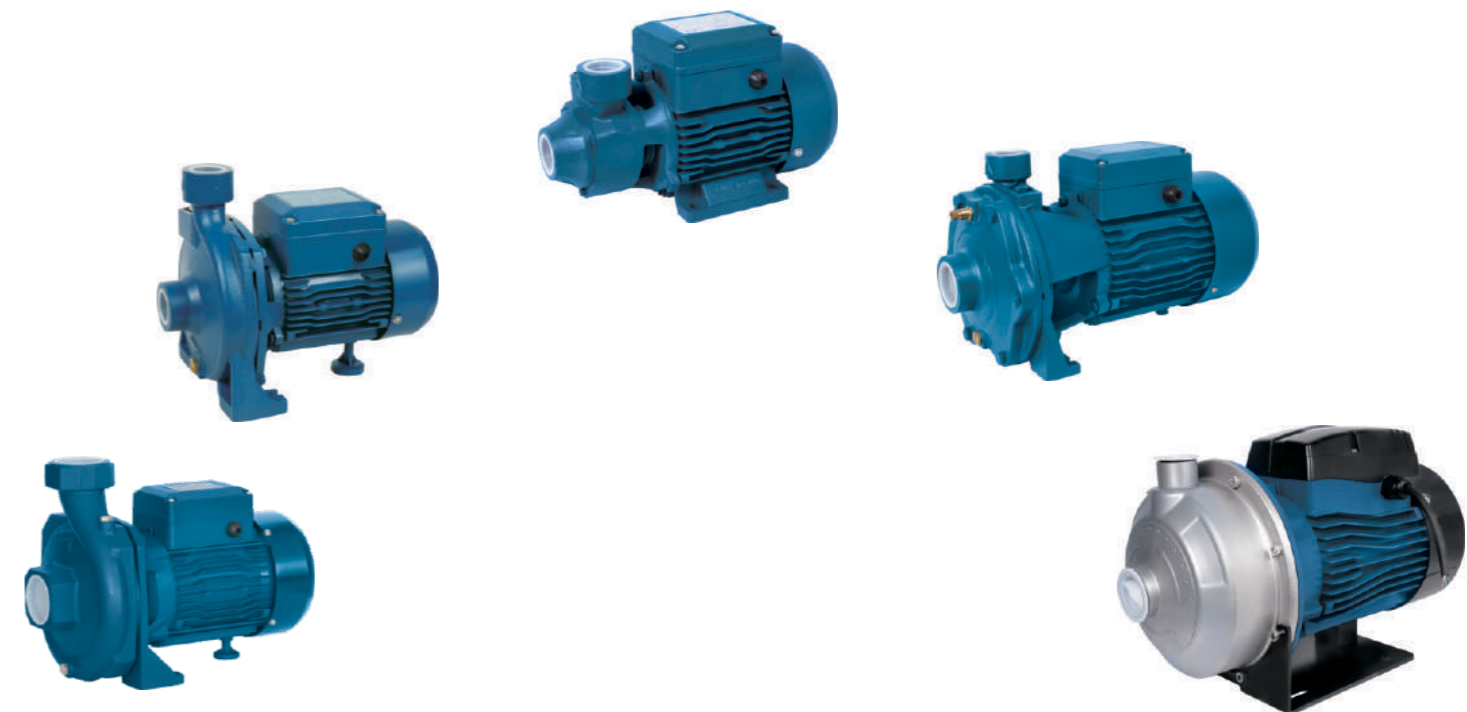




Vk - Vc - Vm- 2Vc - Vs

Pumps

SERIES



CE ISO 9001

Vinco Elettropompe



Via Poggio in Franzione – Cupaello – Italia
Tel: +39 02 94221 438
www.vincoelettopompe.com
E-mail: contatti@vincoelettopompe.com



About us

Vinco elettropompe is a company established in Italy in 1991 specialized in the production of stainless steel submersible motors and submersible pumps for wells. It is a large-scale high-tech enterprise that has received various titles, such as National High-Tech Enterprise, Innovative Enterprise, Intellectual Property Enterprise, and Best Export Enterprise. Taking advantage of its provincial technology and engineering research center, large submersible pump testing center, product design and development team, the company has developed strong independent research and innovation capabilities. The company specializes in the production and sale of stainless steel submersible motors, 3SP, 4SP, 5SP, 6SP and 8SP stainless steel submersible pumps for deep wells, 316L submersible pumps for aquaculture, industrial submersible pumps for sewage, small submersible pumps, horizontal multi-stage centrifugal pumps, vertical multi-stage centrifugal pumps, variable frequency pressure water supply systems, submersible pumps and solar well pumping systems and various pump safety controllers. The company uses advanced submersible pump production technology, test equipment and instruments from Germany, Italy, China and other countries, is a large production and export base of high-quality submersible motors and submersible well pumps. Its products are sold in more than 80 countries and regions, including Europe, America, Africa, the Middle East, Southeast Asia, etc. Major motor products include 0.37kW ~ 185 kW 3", 3.5", 4", 5", 6", 8" and 10" oil and water cooled submersible motors for wells using 220 V, 380 V, 50 Hz and 60 Hz power supply, has an annual production capacity of 600,000 sets. The products are designed and manufactured in accordance with national and international standards and comply with the new NEMA standards.

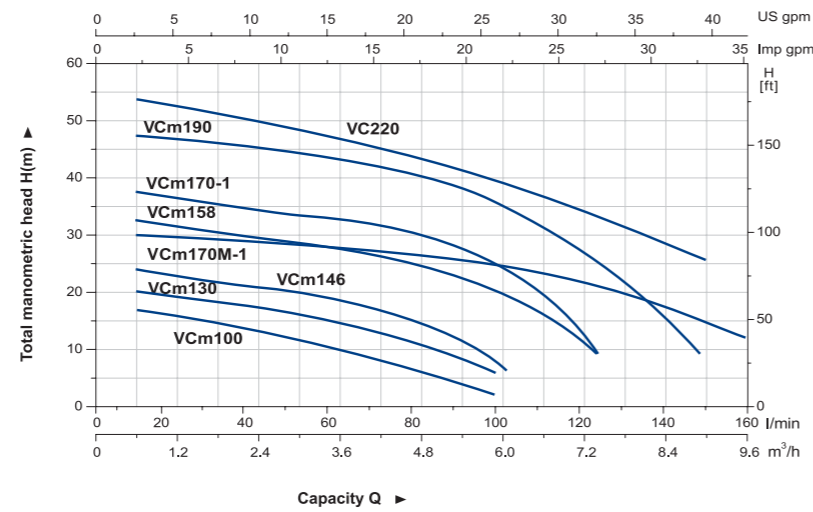


Via Poggio in Franzione – Cupaello – Italia
Tel: +39 02 94221 438
www.vincoelettropompe.com
E-mail: contatti@vincoelettropompe.com



Vcm

HYDRAULIC PERFORMANCE CURVE



Pump

- Transfer of clean water or non-aggressive liquid
- Special anti-rust treatment for pump body and support
- Max. liquid temperature: +60°C
- Max. suction: +8 m

Motor

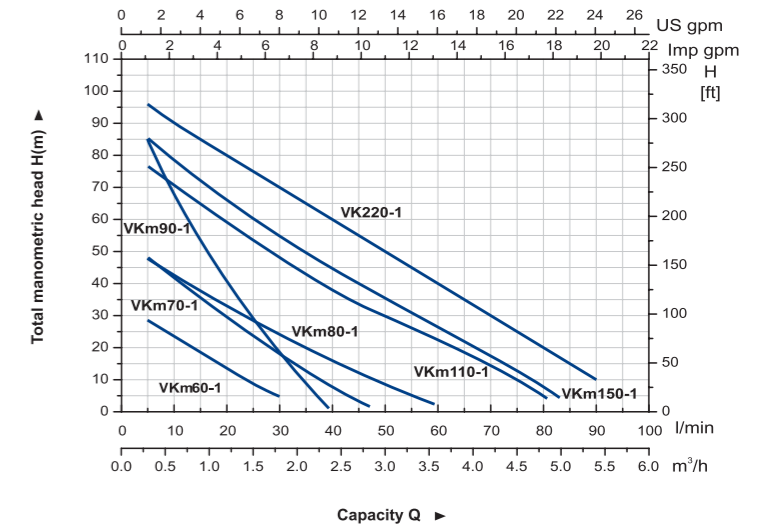
- Copper winding
- Built-in thermal protector for single phase motor
- Insulation class: F
- Protection class: IPX4
- Max. ambient temperature: +40°C

MODEL	POWER		INLET/OUTLET	MAX.FLOW (l/min)	MAX.HEAD (m)	MAX.SUCT (m)
	(kW)	(HP)				
VCm100	0.25	0.33	1" x1"	100	18.5	8
VCm130	0.37	0.5	1" x1"	110	23	8
VCm146	0.60	0.8	1" x1"	110	27	8
VCm158	0.75	1.0	1" x1"	121	33	8
VCm170-1	1.1	1.5	1" x1"	130	41	8
VCm170M-1	1.1	1.5	1 1/4" x1"	160	31	8
VCm190	1.5	2.0	1 1/4" x1"	150	48	8
VC220	2.2	3.0	1 1/4" x1"	150	55	8



VKm

HYDRAULIC PERFORMANCE CURVE



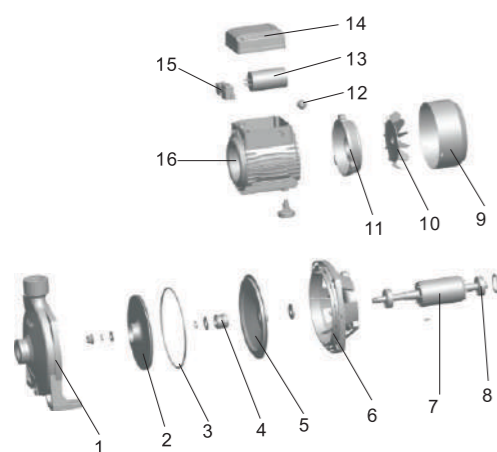
Pump

- Transfer of clean water or non-aggressive liquid
- Brass impeller
- Special anti-rust treatment for pump body and support
- Max. liquid temperature: +60°C
- Max. suction: +8 m

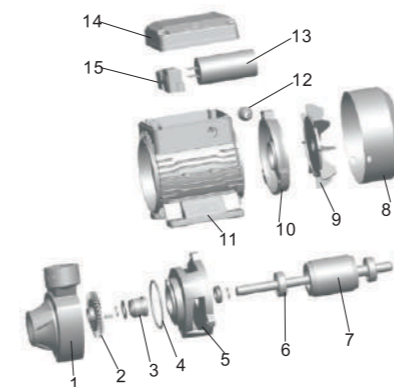
Motor

- Copper winding
- Built-in thermal protector for single phase motor
- Insulation class: F
- Protection class: IPX4
- Max. ambient temperature: +40°C

MODEL	POWER		INLET/OUTLET	MAX.FLOW (l/min)	MAX.HEAD (m)	MAX.SUCT (m)
	(kW)	(HP)				
VKm60-1	0.37	0.5	1" x1"	35	35	8
VKm70-1	0.6	0.8	1" x1"	50	53	8
VKm80-1	0.75	1.0	1" x1"	60	62	8
VKm90-1	0.75	1.0	3/4" x3/4"	35	100	8
VKm110-1	1.1	1.5	1" x1"	80	85	8
VKm150-1	1.5	2.0	1" x1"	85	90	8
VK220-1	2.2	3.0	1" x1"	90	100	8



Part	Material	Remark
1 Pump body	Cast iron	E-coating
2 Impeller	Brass/Noryl/Stainless steel	
3 Sealing ring	NBR	
4 Mechanical seal	Ceramic/Carbon	
5 Bracket cover	Stainless steel	
6 Support	Aluminum	
7 Rotor	Cold-rolled sheet	
8 Bearing		
9 Fan cover	Iron	
10 Fan	Noryl	
11 End plate	Aluminum	
12 Outlet nozzle	NBR	
13 Capacitor		
14 Cover box	ABS	
15 Wire holder assembly		
16 Stator	Aluminum casting	Cold-rolled sheet

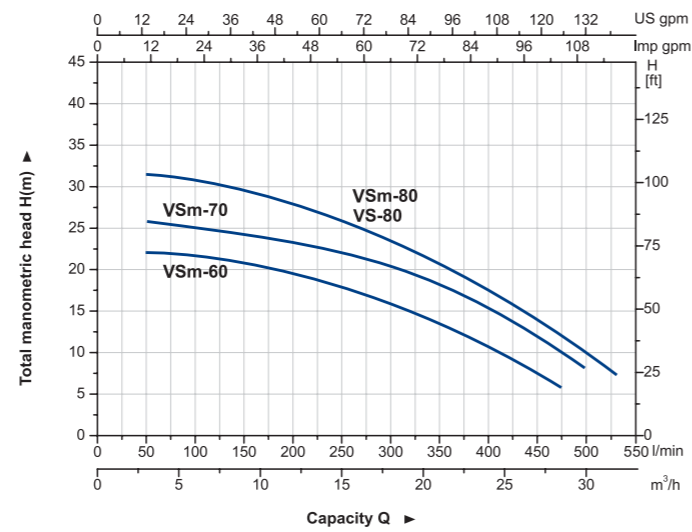


Part	Material	Remark
1 Pump body	Cast iron	E-coating
2 Impeller	Brass	
3 Mechanical seal	Ceramic/Carbon	
4 Sealing ring	NBR	E-coating
5 Support	Cast iron	
6 Bearing		Welded stainless steel shaft
7 Rotor		
8 Fan cover	Iron	
9 Fan	PP	
10 End plate	Aluminum	
11 Stator	Aluminum casting	
12 Outlet nozzle	NBR	
13 Capacitor		
14 Cover box	ABS	
15 Terminal		



VSm

HYDRAULIC PERFORMANCE CURVE



Pump

- Transfer of clean water or non-aggressive liquid
- Special anti-rust treatment for pump body and support
- Max. liquid temperature: +60°C
- Max. suction: +8 m

Motor

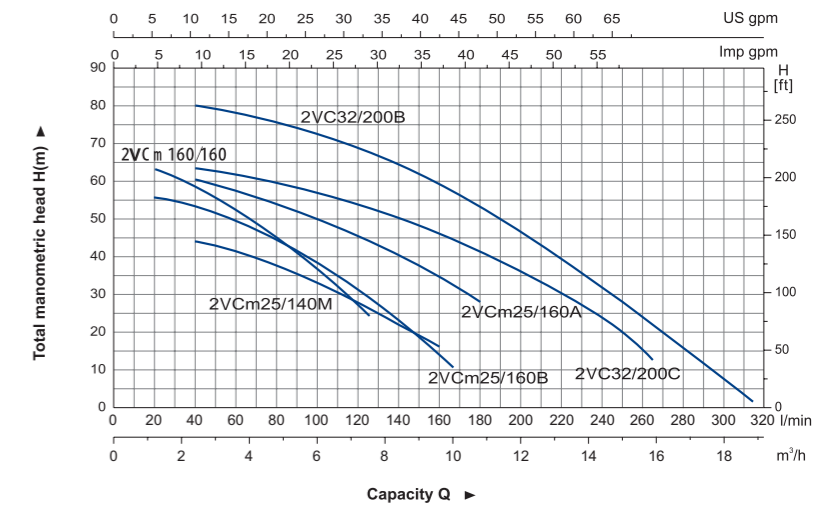
- Copper winding
- Built-in thermal protector for single phase motor
- Insulation class: F
- Protection class: IPX4
- Max. ambient temperature: +40°C

MODEL	POWER		INLET/OUTLET	MAX.FLOW (l/min)	MAX.HEAD (m)	MAX.SUCT (m)
	(kW)	(HP)				
VSm-60	1.1	1.5	2" x2"	480	22	8
VSm-70	1.5	2.0	2" x2"	500	26	8
VSm-80	2.2	3.0	2" x2"	540	32	8
VS-80	2.2	3.0	2" x2"	540	32	8



VCm

HYDRAULIC PERFORMANCE CURVE



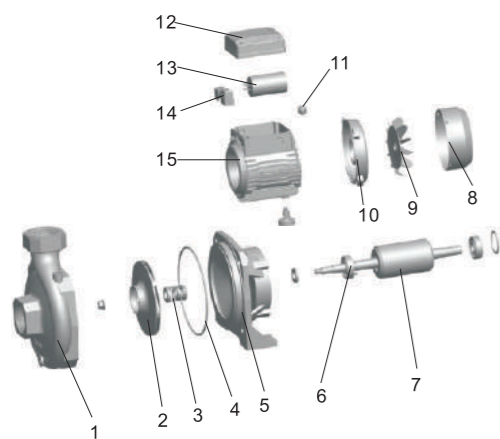
Pump

- Transfer of clean water or non-aggressive liquid
- Special anti-rust treatment for pump body and support
- AISI 304 shaft
- Max. liquid temperature: +60°C
- Max. suction: +8 m

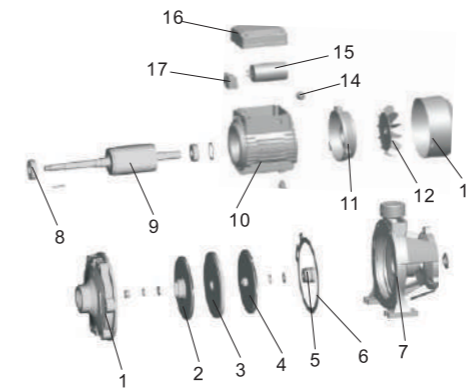
Motor

- Copper winding
- Built-in thermal protector for single phase motor
- Insulation class: F
- Protection class: IPX4
- Max. ambient temperature: +40°C

MODEL	POWER		INLET/OUTLET	MAX.FLOW (l/min)	MAX.HEAD (m)	MAX.SUCT (m)
	(kW)	(HP)				
2VCm25/140M	1.1	1.5	1 1/2" x1"	160	47	8
2VCm160/160	1.5	2.0	1 1/4" x1"	125	66	8
2VCm25/160B	1.5	2.0	1 1/2" x1"	165	57.5	8
2VCm25/160A	2.2	3.0	1 1/2" x1"	180	65	8
2VCm32/200C	3.0	4.0	1 1/2" x1 1/4"	265	65	8
2VC32/200B	4.0	5.5	1 1/2" x1 1/4"	315	82	8



Part	Material	Remark
1	Pump body	Cast iron E-coating
2	Impeller	06Cr 19Ni 10
3	Mechanical seal	Ceramic/Carbon
4	Sealing ring	NBR
5	Support	Cast iron E-coating
6	Bearing	
7	Rotor	Cold-rolled sheet Welded stainless steel shaft
8	Fan cover	Iron
9	Fan	Noryl
10	End plate	Aluminum
11	Outlet nozzle	NBR
12	Cover box	ABS
13	Capacitor	
14	Terminal	
15	Stator	Aluminum casting Cold-rolled sheet



Part	Material	Remark
1	Pump body	Cast iron E-coating
2	Impeller	Brass
3	Eliminator	Cast iron
4	Impeller	Brass
5	Mechanical seal	Ceramic/Carbon
6	Sealing ring	NBR
7	Support	Cast iron
8	Bearing	
9	Rotor	Cold-rolled sheet Welded stainless steel shaft
10	Stator	Aluminum casting Cold-rolled sheet
11	End plate	Cast iron/Aluminum
12	Fan	Noryl
13	Fan cover	Iron
14	Outlet nozzle	NBR
15	Capacitor	
16	Cover box	ABS
17	Terminal	

Application

- It is applicable to household water supply, equipment support, pipeline pressurization, garden watering, vegetable greenhouse watering, fish farming and poultry raising, industrial and mining, water supply and drainage of enterprises and high-rise buildings, central air conditioner and centralized heating circulation system, etc.

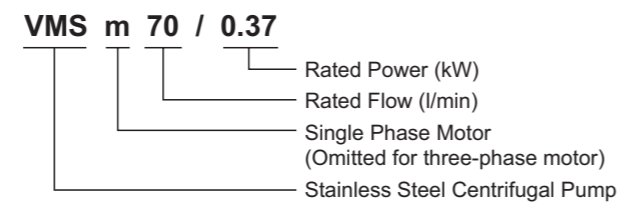
Pump

- AISI 304 pump body
- AISI 304 shaft
- Max.liquid temperature: +85°C
- Altitude: up to 1000 m

Motor

- C&U bearing
- Motor with copper winding
- Built-in thermal protector for single phase motor
- Insulation class: F
- Protection class: IPX4
- Max.temperature: +85°C

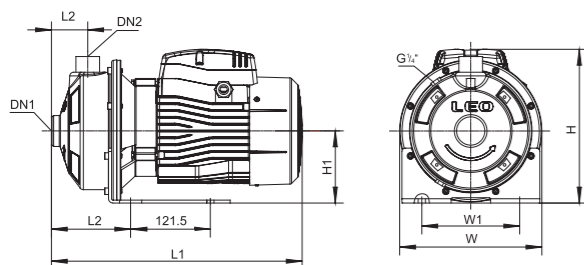
Identification Codes



VMS

Technical Data

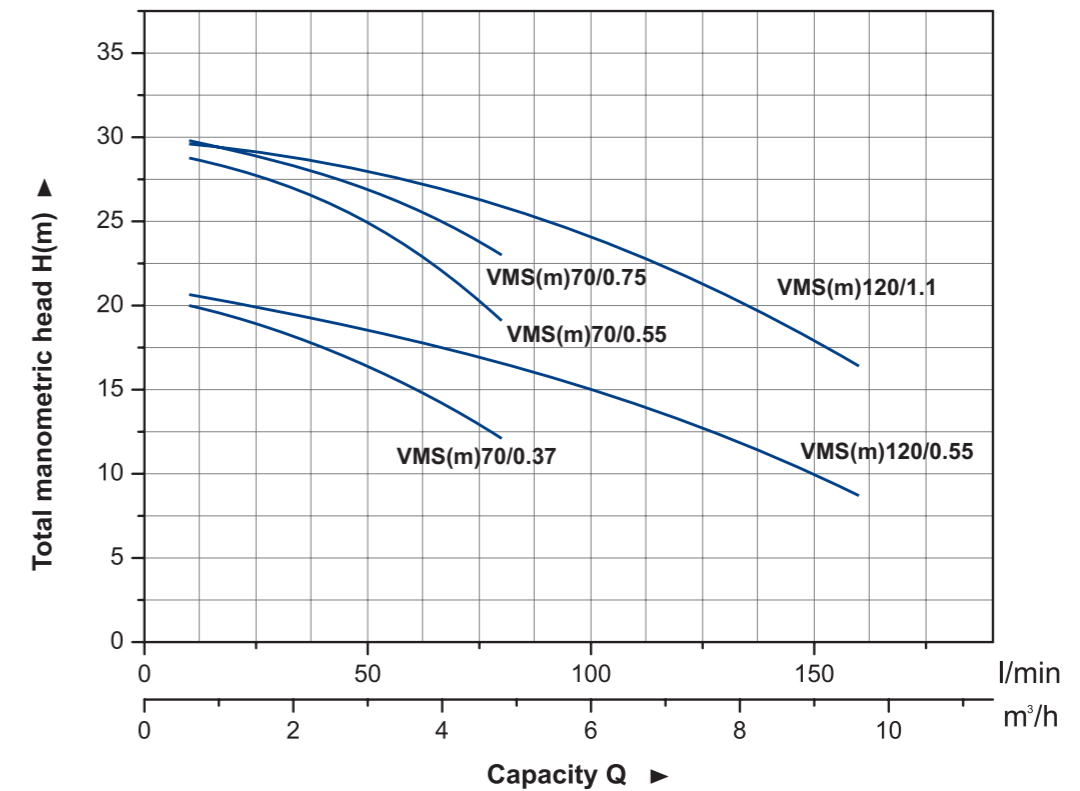
		Power		l/min	Capacity Q (m³/h)												
Single Phase	Three Phase	kW	HP		0	30	40	60	80	100	120	140	160	180			
				0.55	0.75	0	1.8	2.4	3.6	4.8	6	7.2	8.4	9.6	10.8		
VMSm120/0.55	EMS120/0.55	0.55	0.75	H (m)	0.75	-	-	17.9	16.6	15.1	13.3	11.2	8.7	-			



Dimension

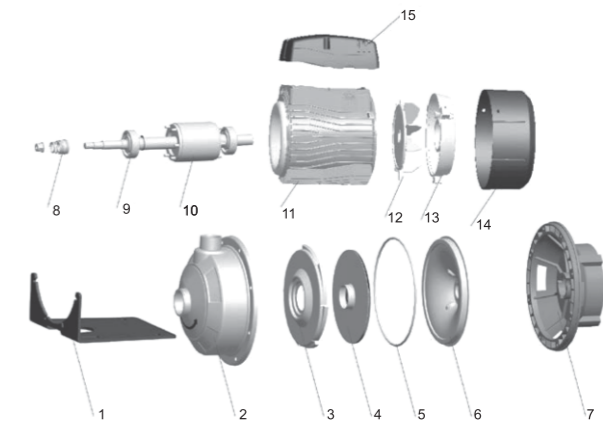
Model	Ports		L (mm)	W (mm)	H (mm)	L1 (mm)	L2 (mm)	W1 (mm)	H1 (mm)
	DN1	DN2							
VMS(m)70/0.37	1 1/4"	1"	332	210	224	119	55	149	110
VMS(m)70/0.55	1 1/4"	1"	332	210	224	119	55	149	110
VMS(m)70/0.75	1 1/4"	1"	381	210	234	119	55	149	110
VMS(m)120/0.55	1 1/4"	1"	332	210	224	119	55	149	110
VMS(m)120/1.1	1 1/4"	1"	381	210	234	119	55	149	110

HYDRAULIC PERFORMANCE CURVE



Materials Table

No.	Part	Material
1	Bottom support	Steel
2	Pump body	AISI 304
3	Diffuser	AISI 304
4	Impeller	AISI 304
5	O-ring	NBR
6	Airproof plate	AISI 304
7	Support	ZL102
8	Mechanical seal	Ceramic/Carbon
9	Ball bearing	
10	Rotor	
11	Stator	
12	Fan	PP
13	Rear housing	ZL102
14	Fan cover	PP
15	Terminal box	ABS



Package Information

	GW (kgs)	L (mm)	W (mm)	H (mm)	Quantity (PCS/20'TEU)
VMS(m)70/0.37	10	380	240	270	1200
VMS(m)70/0.55	11	380	240	270	1200
VMS(m)70/0.75	14	410	240	270	1104
VMS(m)120/0.55	11	380	240	270	1200
VMS(m)120/1.1	15	410	240	270	