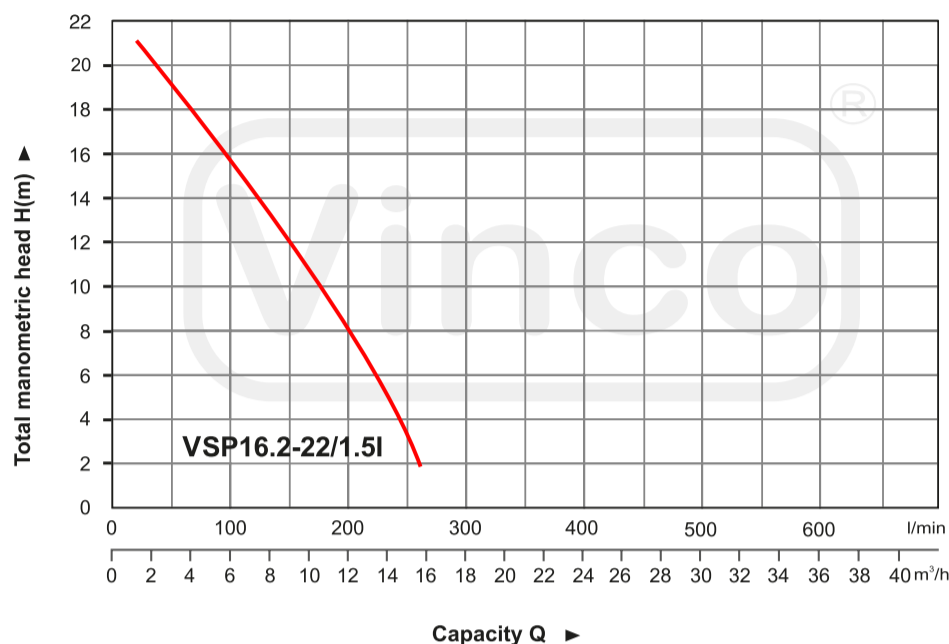




**VSP16.2-22/1.5I**

### Hydraulic Performance Curves



### Application

- Wastewater drainage in factories, construction sites and commercial facilities
- Drainage system in municipal sewage treatment plants
- Drainage system in residential quarters
- Municipal projects
- Methane pools and field irrigation in countryside

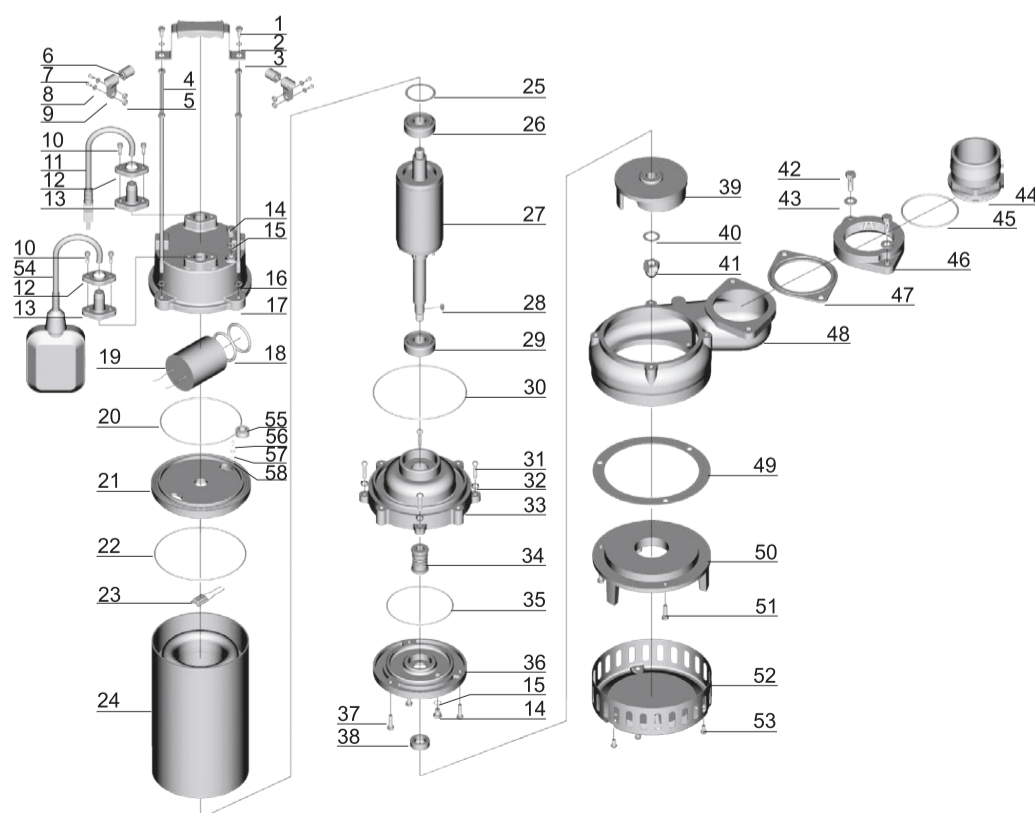
### Pump

- Max. immersion design: 5m
- Max. liquid temperature: +40°C
- Liquid pH value: 4 – 10
- Liquid kinematic viscosity:  $7 \times 10^{-7} - 23 \times 10^{-6} \text{ m}^2/\text{s}$
- Max. liquid density:  $1.2 \times 10^3 \text{ kg/m}^3$

### Motor

- Copper winding
- Built-in thermal protector
- Stainless steel welded shaft
- Insulation class: B
- Protection class: IP68

MODEL	POWER		OUTLET (mm)	VOLTAGE (V/Hz)	MAX.FLOW (l/min)	MAX.HEAD (m)	MAX.DIA OF PARTICLE (mm)
	(kW)	(HP)					
VSP16.2-22/1.5I	1.5	2.0	40	220/50	270	22	10

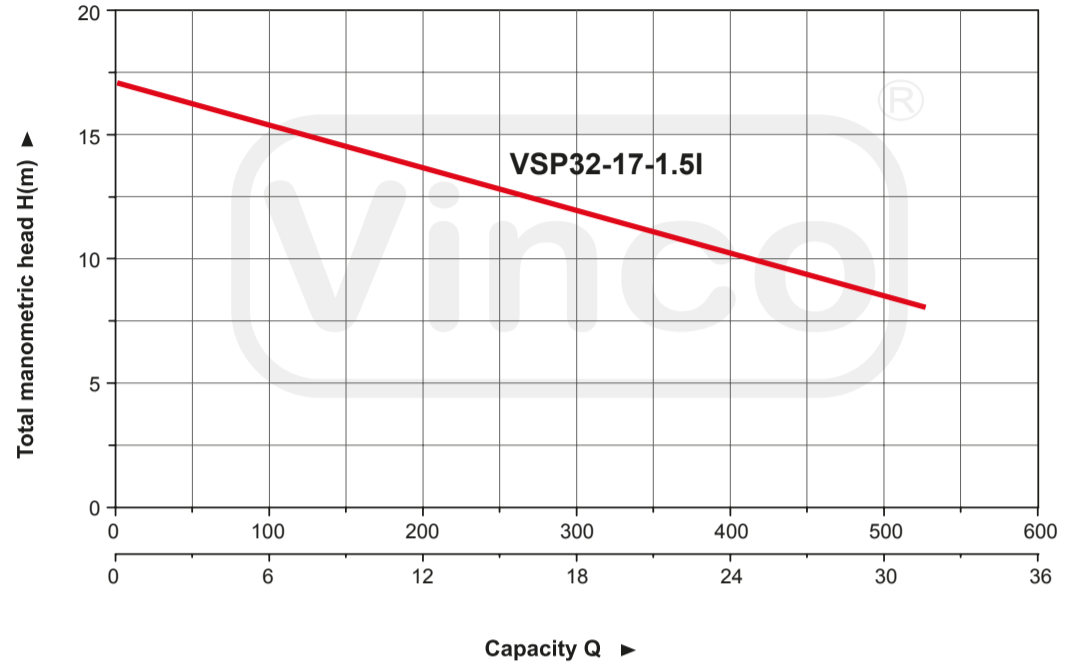


No.	Part	No.	Part
1	Bolt	30	O-ring
2	Washer	31	Screw
3	Handle	32	Stretching washer
4	Bolt	33	Connection part
5	Nut	34	Mechanical seal
6	Protector	35	O-ring
7	Screw	36	Oil chamber cover
8	Washer	37	Bolt
9	Cable presser	38	Oil seal
10	Screw	39	Impeller
11	Cable	40	Washer
12	Flange	41	Nut
13	Cable protector	42	Bolt
14	Bolt	43	Washer
15	O-ring	44	Connector
16	Stretching washer	45	O-ring
17	Capacitor cover	46	Connector nut
18	O-ring	47	Rubber washer
19	Capacitor	48	Pump body
20	O-ring	49	Rubber washer
21	Motor cover	50	Pump body
22	O-ring	51	Bolt
23	Thermal protector	52	Filter mesh
24	Stator	53	Screw
25	Wave washer	54	Float switch
26	Ball bearing	55	Cable holder
27	Rotor	56	Screw
28	Key	57	Stretching washer
29	Ball bearing	58	Washer



**VSP**

### Hydraulic Performance Curves



### Application

- Wastewater drainage in factories, construction sites and commercial facilities
- Drainage system in municipal sewage treatment plants
- Drainage system in residential quarters
- Municipal projects
- Methane pools and field irrigation in countryside

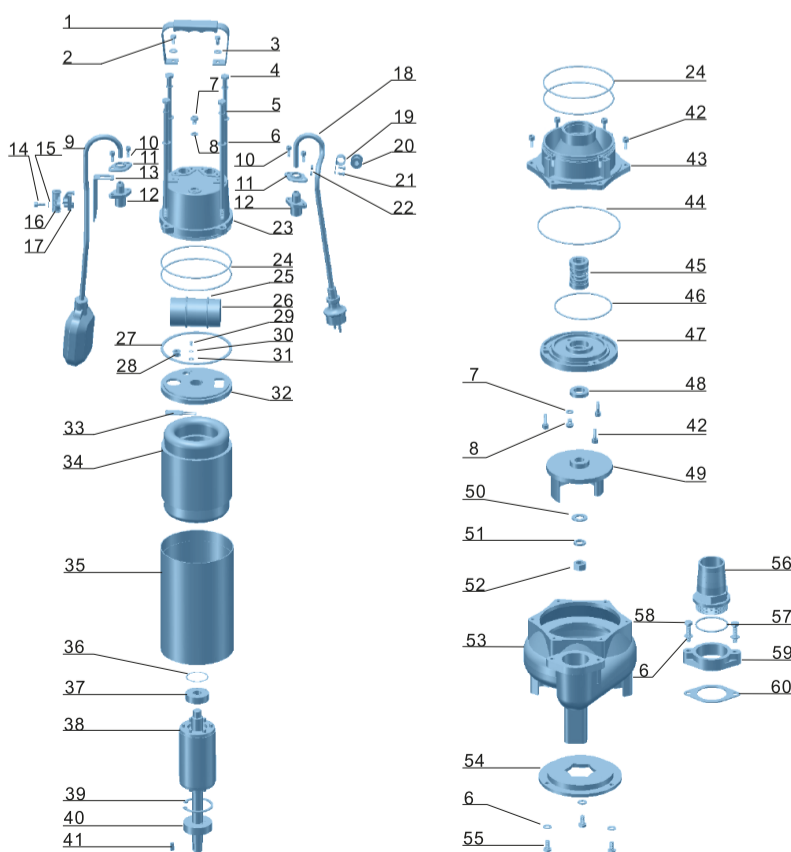
### Pump

- Max. immersion design: 5m
- Max. liquid temperature: +40°C
- Liquid pH value : 4 - 10
- Liquid kinematic viscosity :  $7 \times 10^{-7} - 23 \times 10^{-6} \text{ m}^2/\text{s}$
- Max. liquid density:  $1.2 \times 10^3 \text{ kg/m}^3$

### Motor

- Copper winding
- Built-in thermal protector
- Stainless steel welded shaft
- Insulation class: B
- Protection class: IP68

MODEL	POWER		OUTLET (mm)	VOLTAGE (V/Hz)	MAX.FLOW (l/min)	MAX.HEAD (m)	MAX.DIA OF PARTICLE (mm)
	(kW)	(HP)					
VSP32-17-1.5I	1.5	2	50	220/50	530	17	25



No.	Part	No.	Part	No.	Part
1	Handle	21	Screw	41	Key
2	Bolt	22	Nut	42	Screw
3	Washer	23	Capacitor cover	43	Connection part
4	Bolt	24	O-ring	44	O-ring
5	Spring washer	25	O-ring	45	Mechanical seal
6	Washer	26	Capacitor	46	O-ring
7	Screw	27	Gasket	47	Oil chamber cover
8	O-ring	28	Line protector	48	Oil seal
9	Float switch	29	Screw	49	Impeller
10	Screw	30	Serrated lock washer	50	Washer
11	Flange	31	Washer	51	Spring washer
12	Cable protector	32	Motor cover	52	Nut
13	Guide support	33	Motor protector	53	Pump body
14	Screw	34	Motor	54	Pump cover
15	Washer	35	Motor casing	55	Bolt
16	Clamp	36	Undulated washer	56	Discharge
17	Adjustable bracket	37	Upper bearing	57	O-ring
18	Cable	38	Rotor	58	Bolt
19	Cable presser	39	Circlip	59	Connection nut
20	Protector	40	Lower bearing	60	Gasket

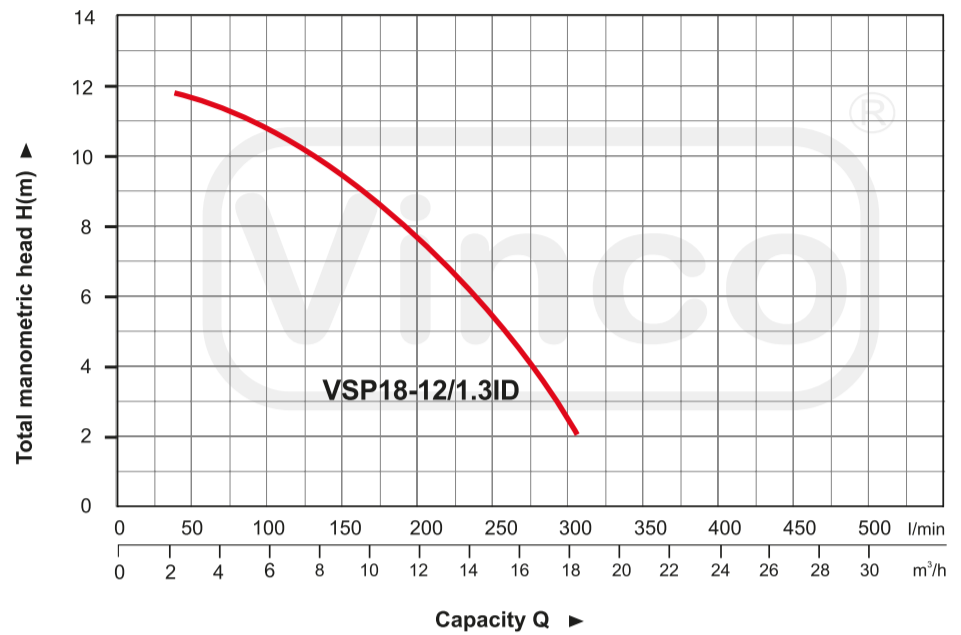


**VSP**



Cutting Blade

### Hydraulic Performance Curves



### Application

- Wastewater drainage in factories, construction sites and commercial facilities
- Drainage system in municipal sewage treatment plants
- Drainage system in residential quarters
- Municipal projects
- Methane pools and field irrigation in countryside

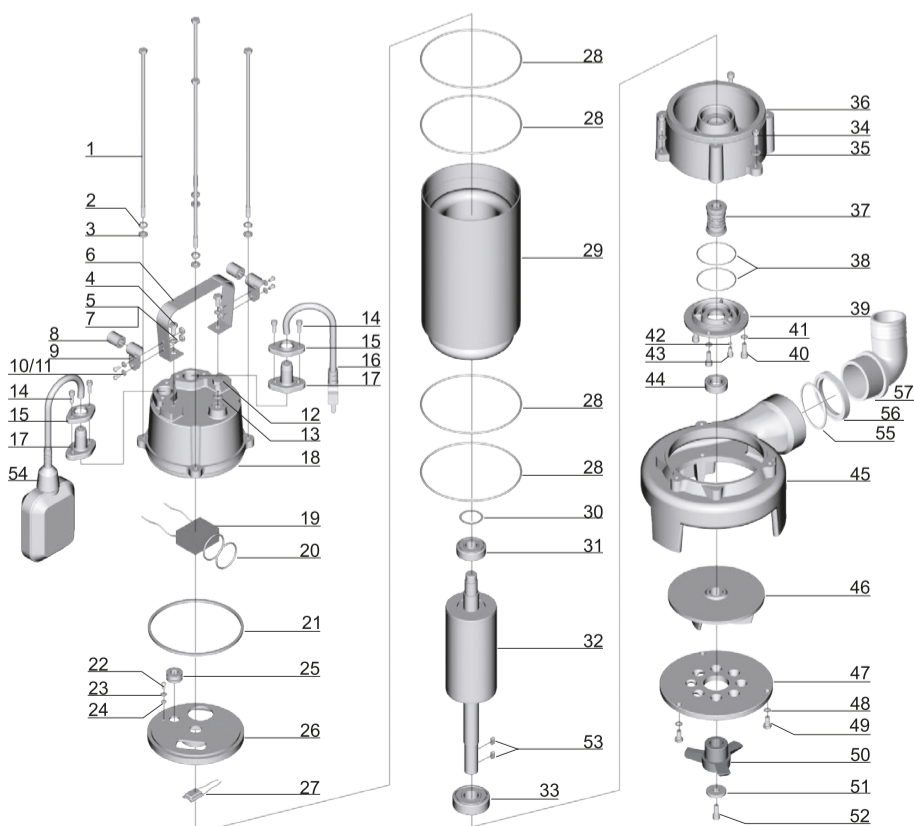
### Pump

- Max. immersion design: 5m
- Max. liquid temperature: +40°C
- Liquid pH value: 4 – 10
- Liquid kinematic viscosity :  $7 \times 10^{-7} - 23 \times 10^{-6} \text{ m}^2/\text{s}$
- Max. liquid density:  $1.2 \times 10^3 \text{ kg/m}^3$

### Motor

- Copper winding
- Built-in thermal protector
- Stainless steel welded shaft
- Insulation class: B
- Protection class: IP68

MODEL	POWER		OUTLET (mm)	VOLTAGE (V/Hz)	MAX.FLOW (l/min)	MAX.HEAD (m)	MAX.DIA OF PARTICLE (mm)
	(kW)	(HP)					
VSP18-12/1.3ID	1.3	1.75	50	220/50	300	12	22.8

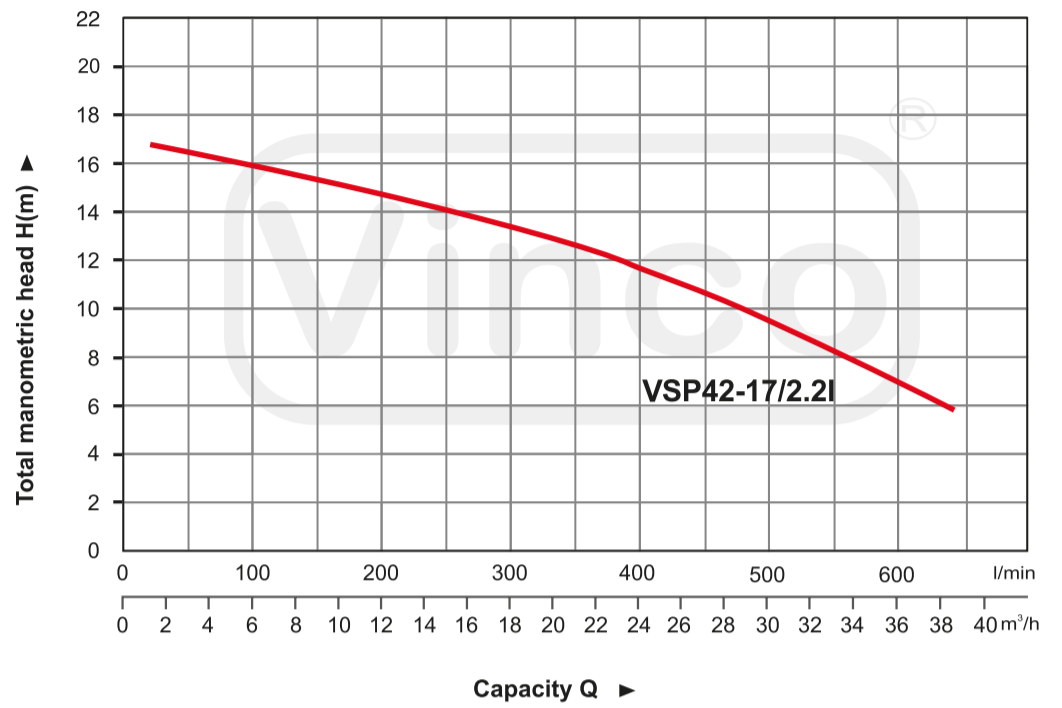


No.	Part	No.	Part
1	Bolt	30	Undulated washer
2	Stretching washer	31	Ball bearing
3	Washer	32	Rotor
4	Bolt	33	Ball bearing
5	Washer	34	Screw
6	Handle	35	Washer
7	Nut	36	Connection part
8	Protector	37	Mechanical seal
9	Cable presser	38	O-ring
10	Washer	39	Oil chamber cover
11	Screw	40	Screw
12	Bolt	41	Washer
13	O-ring	42	O-ring
14	Screw	43	Screw
15	Flange	44	Oil seal
16	Cable	45	Pump body
17	Cable protector	46	Impeller
18	Capacitor cover	47	Shredding ring
19	Capacitor	48	Washer
20	O-ring	49	Bolt
21	Rubber washer	50	Radial cutter
22	Screw	51	Washer
23	Stretching washer	52	Screw
24	Washer	53	Key
25	Line protector	54	Float switch
26	Motor cover	55	O-ring
27	Thermal protector	56	Connection nut
28	O-ring	57	Out-let connector
29	Motor stator		



**VSP**

## Hydraulic Performance Curves



### Application

- Wastewater drainage in factories, construction sites and commercial facilities
- Drainage system in municipal sewage treatment plants
- Drainage system in residential quarters
- Municipal projects
- Methane pools and field irrigation in countryside

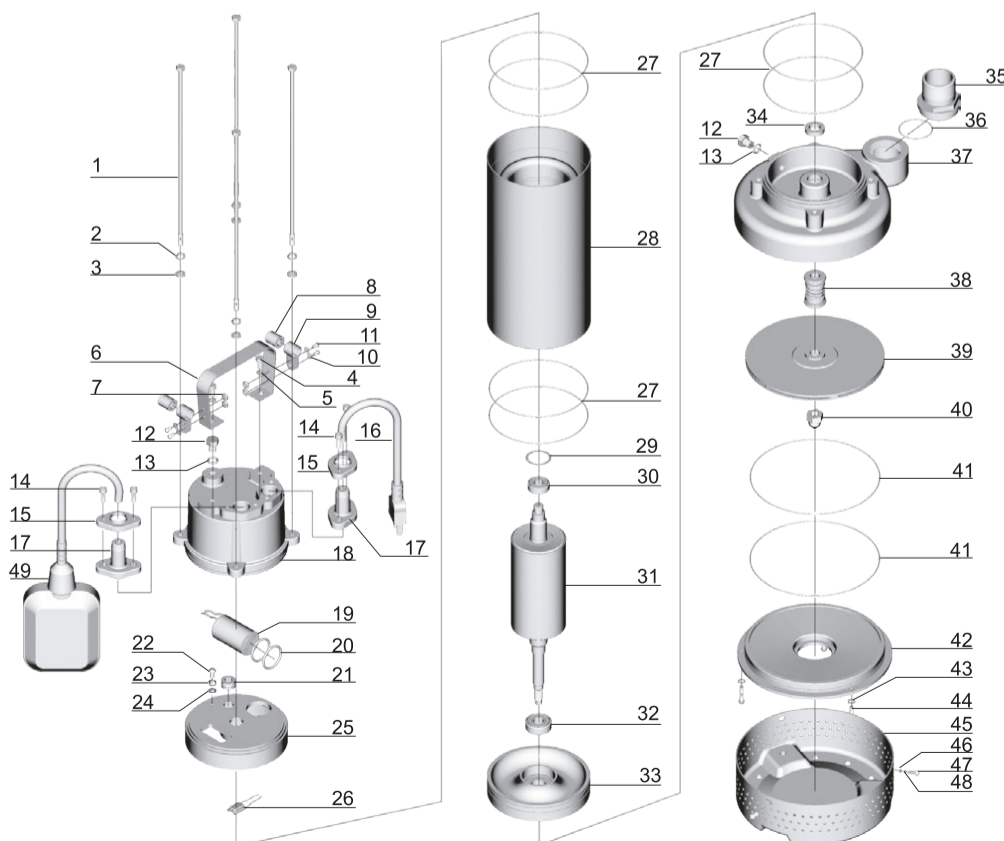
### Pump

- Max. immersion design: 5m
- Max. liquid temperature: +40°C
- Liquid pH value: 4 – 10
- Liquid kinematic viscosity :  $7 \times 10^{-7} - 23 \times 10^{-6} \text{ m}^2/\text{s}$
- Max. liquid density:  $1.2 \times 10^3 \text{ kg/m}^3$

### Motor

- Copper winding
- Built-in thermal protector
- Stainless steel welded shaft
- Insulation class: B
- Protection class: IP68

MODEL	POWER		OUTLET (mm)	VOLTAGE (V/Hz)	MAX.FLOW (l/min)	MAX.HEAD (m)	MAX.DIA OF PARTICLE (mm)
	(kW)	(HP)					
VSP42-17/2.2I	2.2	3.0	75	220/50	700	17	20



No.	Part	No.	Part
1	Bolt	26	Thermal protector
2	Stretching washer	27	O-ring
3	Washer	28	Stator
4	Bolt	29	Wave washer
5	Washer	30	Ball bearing
6	Handle	31	Rotor
7	Nut	32	Ball bearing
8	Protector	33	Lower cover
9	Cable presser	34	Oil seal
10	Washer	35	Connector
11	Screw	36	O-ring
12	Bolt	37	Pump body
13	O-ring	38	Mechanical seal
14	Screw	39	Impeller
15	Flange	40	Nut
16	Cable	41	O-ring
17	Cable protector	42	Pump body
18	Capacitor cover	43	Washer
19	Capacitor	44	Screw
20	O-ring	45	Filter mesh
21	Cable holder	46	Washer
22	Screw	47	Screw
23	Stretching washer	48	Stretching washer
24	Washer	49	Float switch
25	Upper cover		