

Model ML-AP



Multi-jet Liquid Sealed Vane Wheel Water Meter

- It is a liquid sealed water meter for residential application in sizes 15mm-50mm for cold water.

Features

- Mechanical transmission movement equates to maximum reliability.
- The chamber of the rollers is liquid filled sealed for protecting the inner parts from the moisture and dust penetration.
- Sealed wet dial register ,direct reading.
- Plastic meter body and plastic ring.
- Particularly suited in lower quality water.

Standards Compliance

- Directive 2014/32/EU on measuring instruments;
- the European Standard EN14154+A1+A2:Water Meter;
- the International Organization of Legal Metrology OIML R-49: 2013(E)

Optional Features

- Several lengths and connections available on request
- Non return Valve

Working Conditions

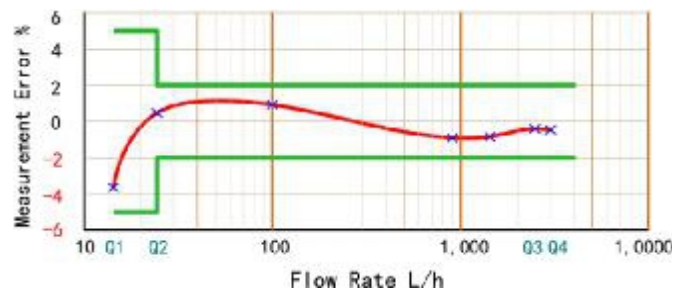
- Water temperature: $\leq 50^{\circ}\text{C}$ for cold water meter
- Water pressure: $\leq 1.6\text{MPa}$ (16bars)

Accessories

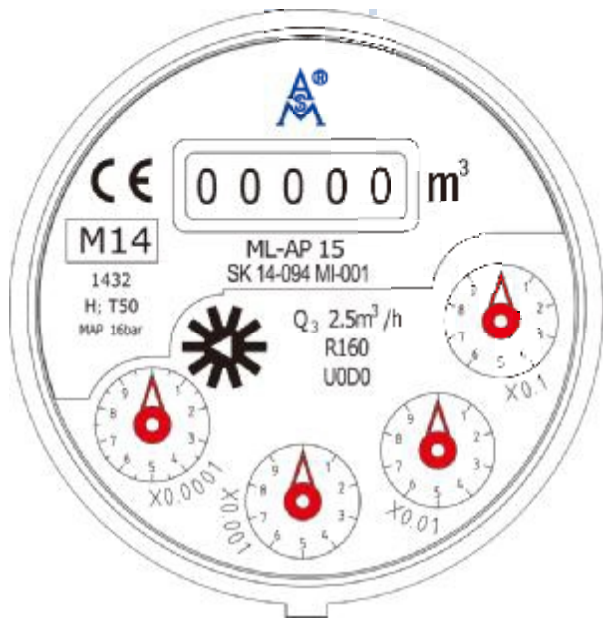
- 2pcs couplings, 2pcs coupling nuts and 2pcs washers.

Maximum Permissible Error

- In the lower zone from Q1 inclusive up to but excluding Q2 is $\pm 5\%$.
- In the upper zone from Q2 inclusive up to and including Q4 is $\pm 2\%$.



Meter Dial Plate(DNI5,R160)



Exploded View

