



DN50-300 Ultrasonic Water Meter

CGM large size ultrasonic water meter is a water meter designed based on the principle of ultrasonic time difference method. The water meter is made of ductile iron with fully welded diameter.

Standards Compliance

ISO4064:2014/ OIML: R49-2013

Feature:

- Ultrasonic water meter, No move part design
- Low starting flow rate, no pressure loss, no mechanical transmission parts, no wear
- Installation in any position
- Multi-function LCD display, which can display accumulated readings, instantaneous flow rate, battery status, pipeline status and other data
- High accuracy level, digital display (10 year battery)
- No air measurement

Long lifetime/stable Accuracy

With innovative design, CGM holds a lifetime of 10 years. This features a maintenance-free quality in its full life time which can significantly reduce the management works of water supply companies.



The main parameters

Temperature	T30/T50	Installation direction	In any position
Maximum working pressure	16 Bar	Working temperature	-22 - +60°C
Accuracy class	Class 2	Storage ambient temperature	-25 - +75°C
Upstream and downstream flow field sensitivity level	U0D0	Waterproof and dustproof grade	IP68
Environmental class	O	Battery supply and life	Li battery, 10 years
Electromagnetic environment class	E2		

Color Options

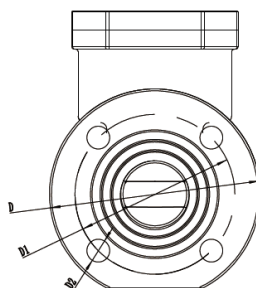
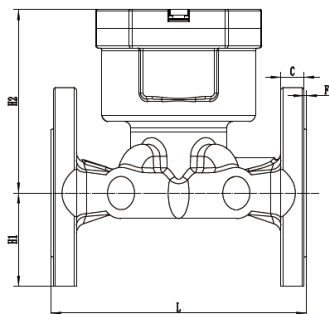


Performance parameters

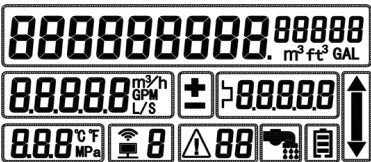
Model	DN	Q3/Q1	Q4	Q3	Q2	Q1	Minimum reading m³	Max reading m³			
	mm		m³/h		L/h						
CGM-50	50	R400	31.25	40	100	62.5	0.00001	999999999			
CGM-65	65		50	40	160	100					
CGM-80	80		78.75	63	252	157.5					
CGM-100	100		125	100	400	250					
CGM-125	125		200	160	640	400					
CGM-150	150		312.5	250	1000	625					
CGM-200	200		500	400	1600	1000					
CGM-250	250		787.5	630	2520	1575					
CGM-300	300		1250	1000	4000	2500					

Overall dimension

Size	Length	Connection method	Channel	Flange diameter	Flange hole
	mm				
DN50	200	Flanged	165	4× Φ18	Default two-channel (Mono optional)
DN65	200		185	4× Φ18	
DN80	225		200	8× Φ18	
DN100	250		220	8× Φ18	
DN125	250		250	8× Φ18	
DN150	300		285	8× Φ18	
DN200	350		340	12× Φ22	
DN250	450		405	12× Φ26	
DN300	450		460	12× Φ26	



Meter Display and details



LCD display: all elements



External communication



Accumulated volume



Error code



Instantaneous flow rate



Pipeline status



Pulse equivalent



Battery status



Temperature and pressure



Flow direction



Positive and negative cumulative reading symbols

